

DIP

Digital Instrument Panel

MDI-5000 · 7000 Series



*Integrated Marine
Solutions Provider*

www.mrckorea.com

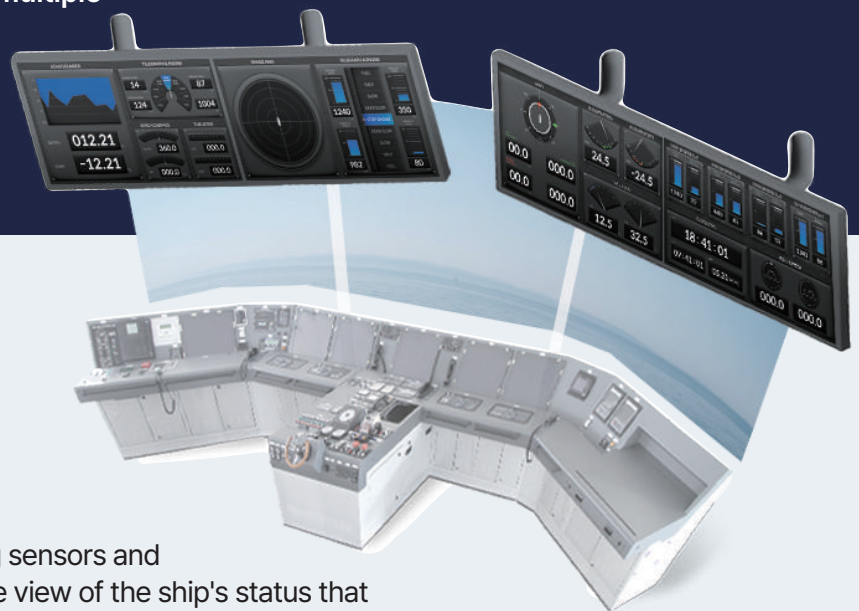
SINCE 1961

About

MDI-5000 · 7000 Series DIP

DIGITAL INSTRUMENT PANEL

- Provides real-time data and information about the ship's operation and systems
- Computer-based data acquisition and monitoring system collects and displays the data from the sensors and instruments on the ship
- Provides warnings and alerts if any systems malfunction or require attention
- Intuitively user configurable:
 - The display can be configured to match the users' needs
 - The display can dynamically adapt to different situations and change the type of information, which was not available with analogue instrument panel
- The DIP uses various types of data from multiple sources including but not limited to the gyrocompass, GPS, thruster, and the engines, and displays the images on the overhead display



Real-Time Data

Provides real-time data on the ship's operation and systems, allowing the navigators to monitor and adjust performance as needed

Intuitive Data Visualisation

Collects data from multiple sources, including sensors and instruments, providing a more comprehensive view of the ship's status that let the navigators see all the necessary information

User Configurable

User-configurable to match the needs of the navigators and the ship's operations

Safety

Provides alerts and warnings if any systems malfunction or require attention, ensuring safe operation of the ship

Integration

Integrates with other shipboard systems, such as CCTV and RADAR systems (AIS information included), providing a more comprehensive view of the ship

CONFIGURATION PANEL

User Configurable

The user can configure the digital information panel to display the data necessary for the ship's operations.

The user can also choose the size and location of each instrument on the panel.

- ✳ The 13.3" touch display configuration panel controls both starboard side and port side displays



DIP Case #1



DIP Case #2



DIP Case #3



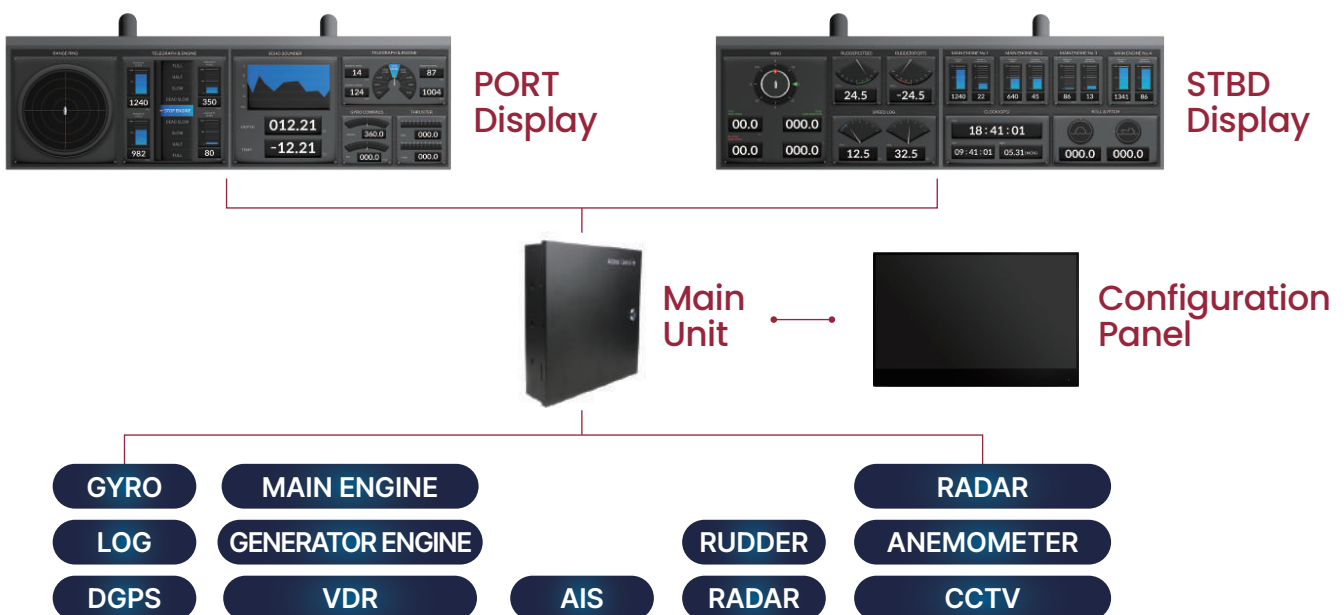
DISPLAYABLE INFORMATION

Sensor Info	Position Speed Course Heading Time Water Depth Wind Direction Wind Speed	Sensor Info	Rate of Turn Rudder Angle Pitch Roll Yaw Thruster Pitch
		Video Info	RADAR Target AIS Target Information

SYSTEM SPECIFICATION

	Specification	Quantity
Display	2×24" 1920×1080 pixel (FHD) on each panel 100 - 240 V AC	2 (PORT, STBD)
Main Unit	Intel i5-13 th Generation 16GB RAM (2×8GB DDR4-3200) 600W Power Supply 100 - 240 V AC	1
Configuration Panel	13.3" 1920×1080 pixel (FHD) touch display	1

SYSTEM DISPLAY CONFIGURATION



• DISPLAY



Dimension

Width	1110 mm
Height	355 mm
Bezel Depth	100 mm

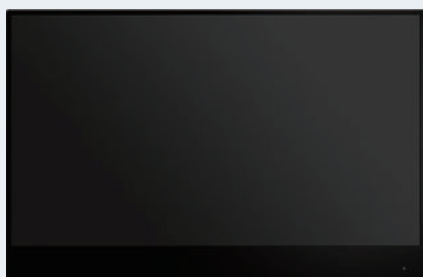
• MAIN UNIT



Dimension

Length	332 mm
Height	335 mm
Depth	115 mm

• CONFIGURATION PANEL



Dimension

Width	305 mm
Height	201 mm
Bezel Depth	9.5 mm

*Integrated Marine
Solutions Provider*



WEBSITE

HEAD OFFICE

6-19, Namhangseo-ro, Yeongdo-gu, Busan, 49050 Korea
Tel : +82-51-414-7891~7 Fax : +82-51-413-2604

CHORYANG OFFICE

MRC Bldg. 7-12, Jungang-daero 236beon-gil, Dong-gu, Busan, 48732 Korea

NOKSAN FACTORY

28, Noksansandan 289-ro, Gangseo-gu, Busan, 46754, Korea

MARINCOM CHEONGHAK OFFICE

21 Cheonghak-ro 6 beon-gil, Yeongdo-gu, Busan, 49017, Korea

www.mrckorea.com